

Dial up Networking is the Windows program that actually makes the phone connection to the Internet. Internet Explorer and Outlook Express use the program automatically to make the connection in order to go out onto the Internet or retrieve e-mail.

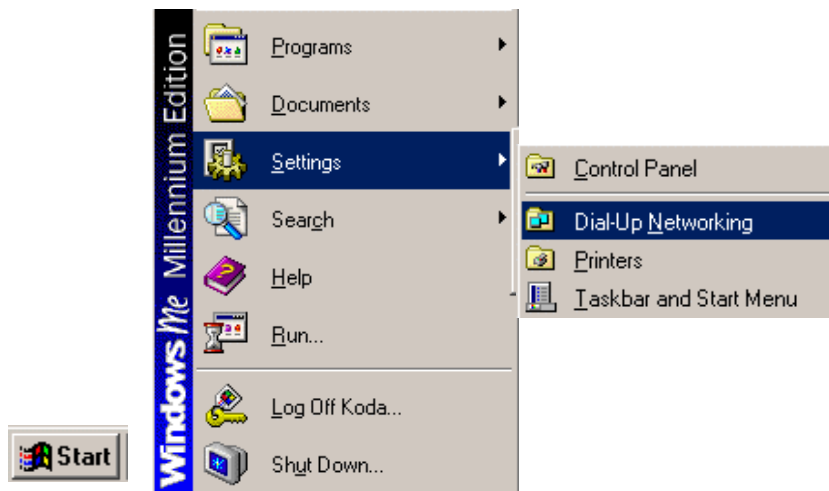
The SuffolkWeb Dial Up Networking connection was created by the Internet Connection Wizard. The setup during this process is normally correct and doesn't need any further adjustments. We provide this documentation for review purposes only.

Notes:

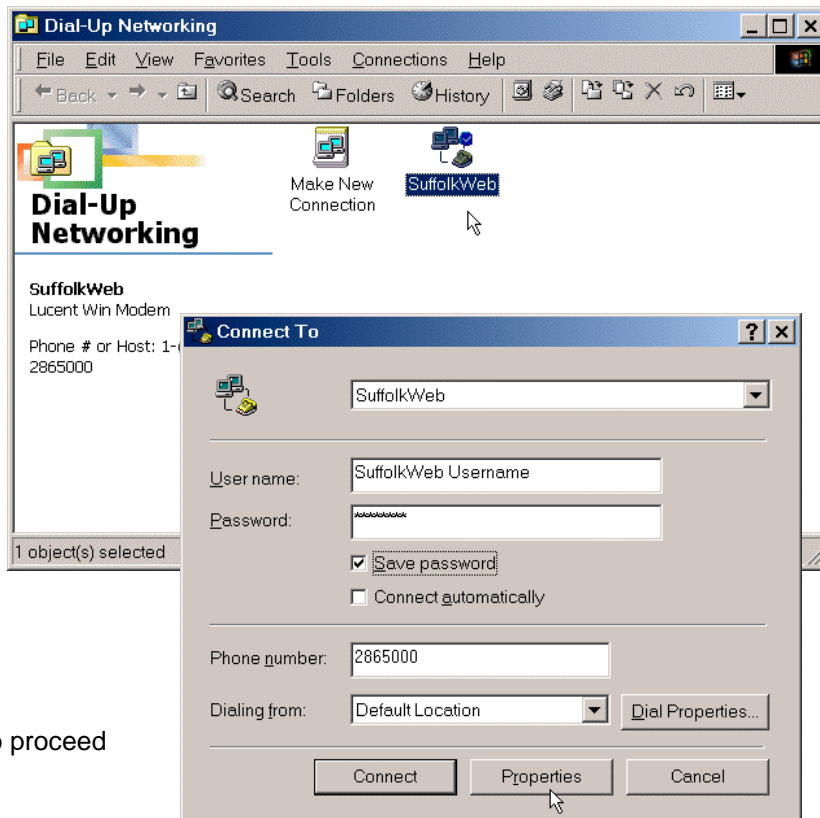
1. You need only one SuffolkWeb icon. Having more than one 'SuffolkWeb' icon is confusing and unnecessary.
2. Match each of the following windows with your own as you proceed. Make the necessary changes in each window before proceeding to the next. Items of special note are boxed.

There are a number of ways to review the SuffolkWeb Dial Up Networking configuration. We recommend the following:

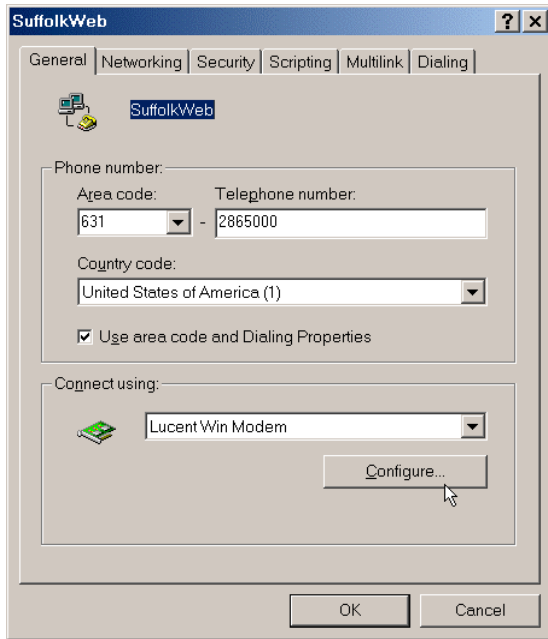
From the Windows Desktop, click on Start then Settings and then Dial Up Networking.



Double-click on your Suffolk Web icon.



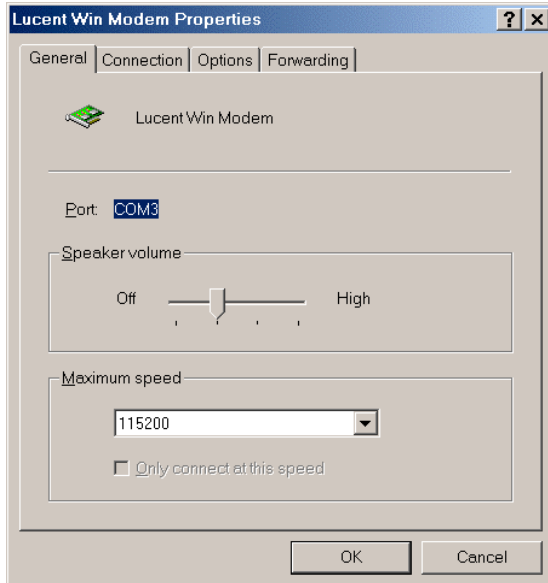
Click on the Properties button to proceed



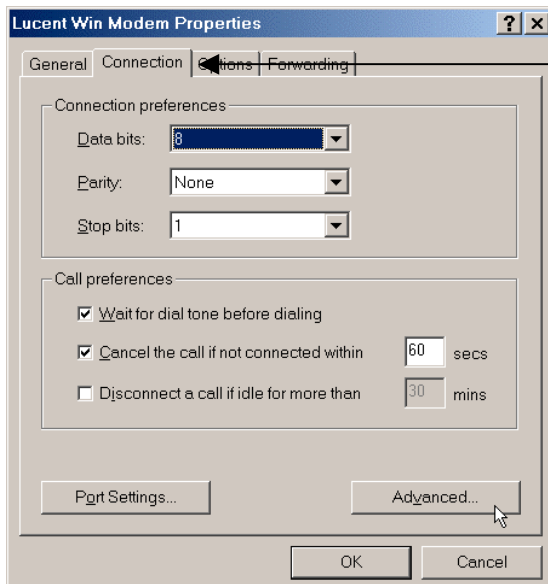
SuffolkWeb has two dial-up locations:  
286-5000 Western Suffolk  
282-0320 Eastern Suffolk

Windows will properly identify your modem;  
your modem may vary from this example.

Click on the Configure button to continue

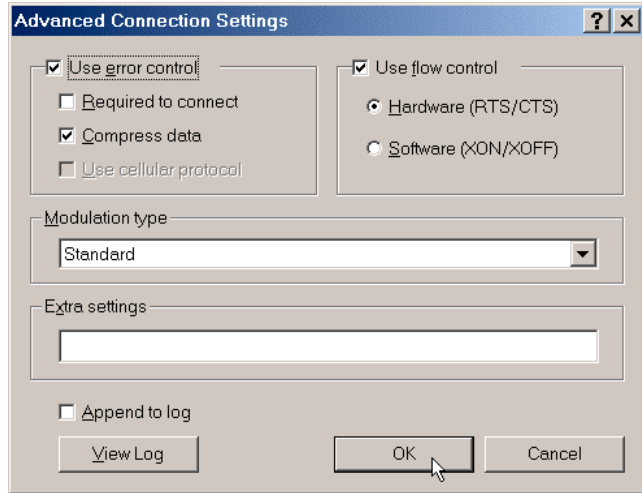


Windows will properly identify the  
Communications Port and Speed for your  
modem; your settings may vary from this  
example.



Click on the Connection tab to continue

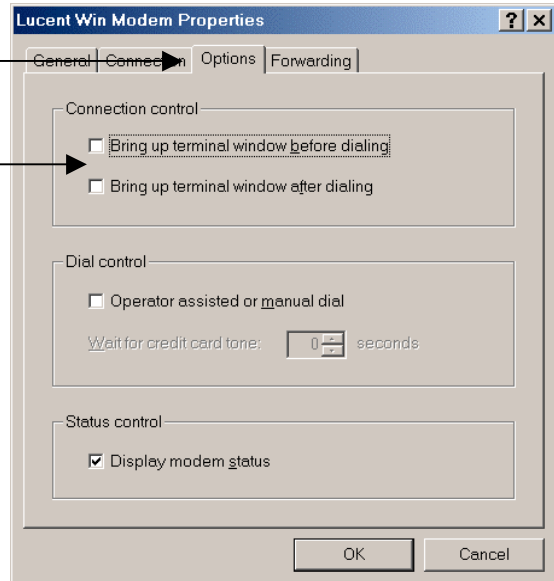
Click on the Advanced button to continue



Click OK to continue

Click on the Options tab to continue

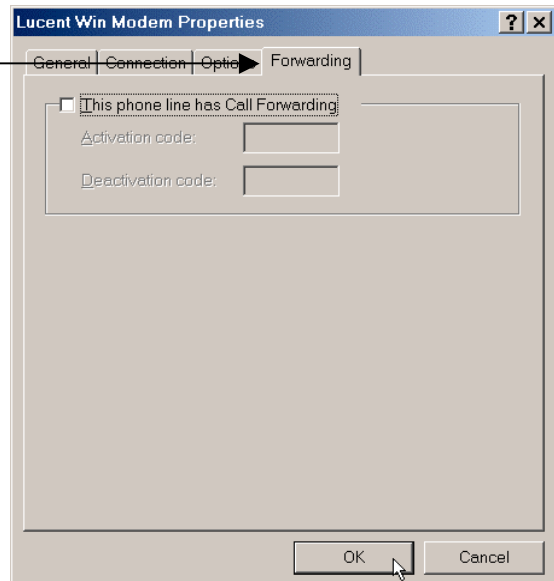
SuffolkWeb uses automatic logon protocols. Neither box should be checked.



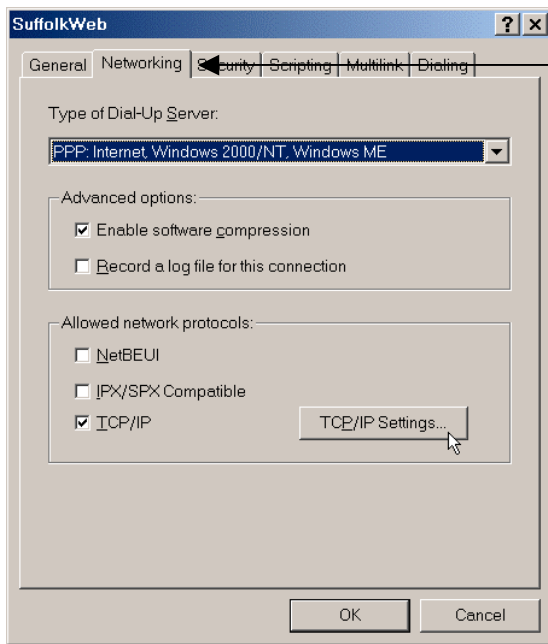
Click on the Forwarding tab to continue

*You may or may not have this tab and may have additional tabs depending upon your make and model modem.*

*The default settings in any of these windows should be acceptable by the Suffolk Web connection.*

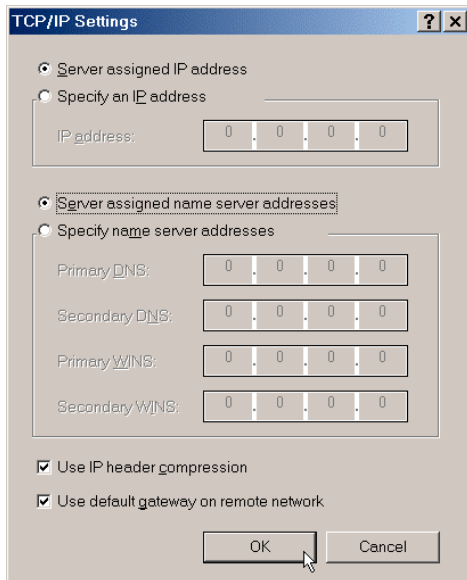


Click OK to continue

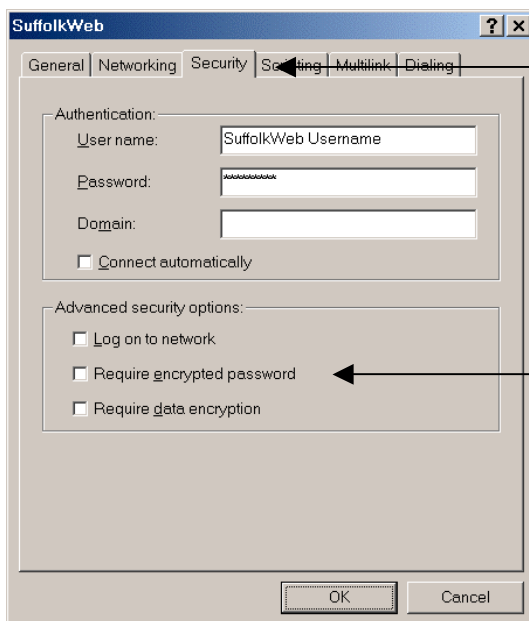


Click on the Networking tab to continue

Click on the TCP/IP Settings tab to continue



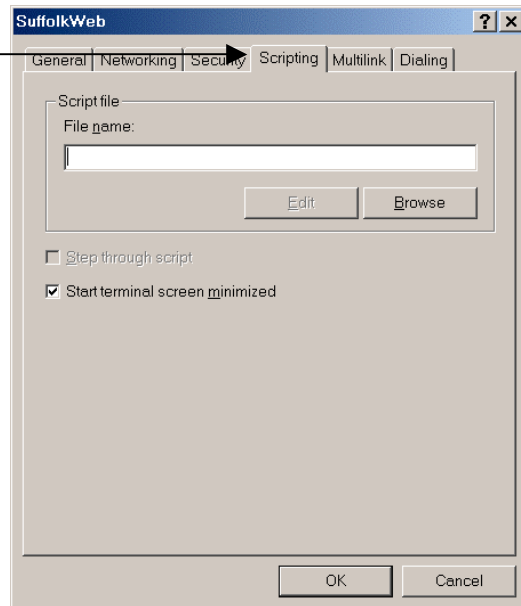
Click OK to continue



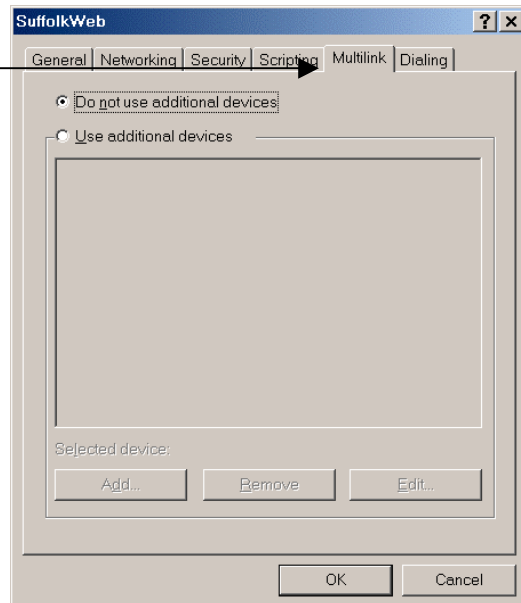
Click on the Security tab to continue

Make sure none of the three Advanced Security options are checked.

Click on the Scripting tab to continue



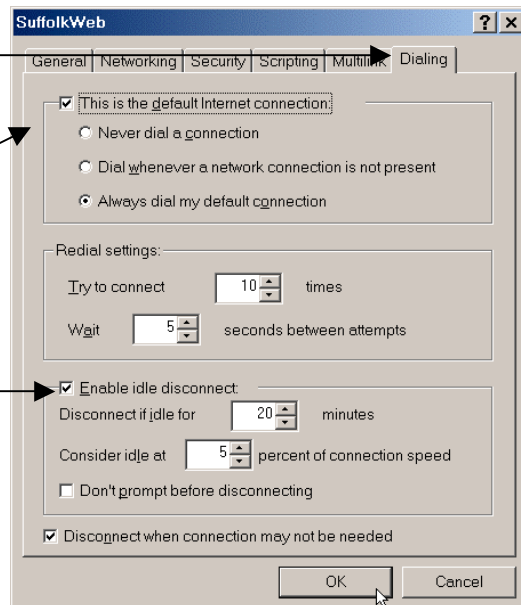
Click on the Multilink tab to continue



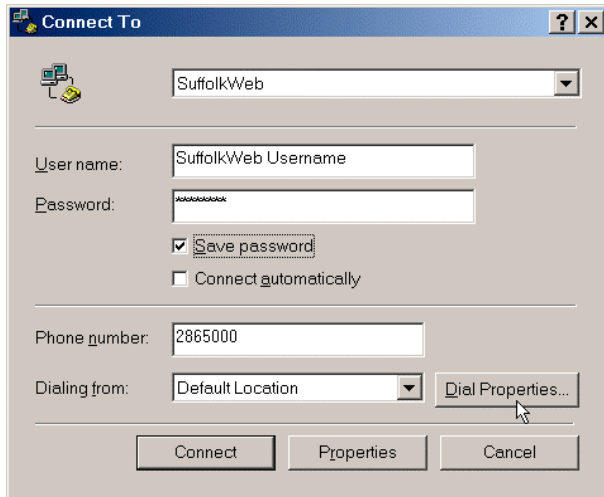
Click the Dialing tab to continue

The default Windows ME settings are typically fine.

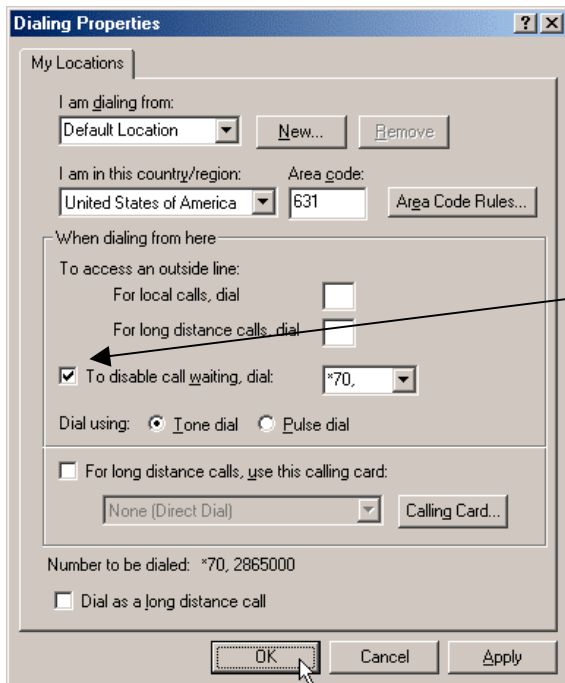
1. If you have multiple Internet providers you may wish to review this first group of options.
2. An idle disconnect means that any program that used this SuffolkWeb connection to connect to the Internet has become idle because of inactivity.



**Finished!** Click OK to continue



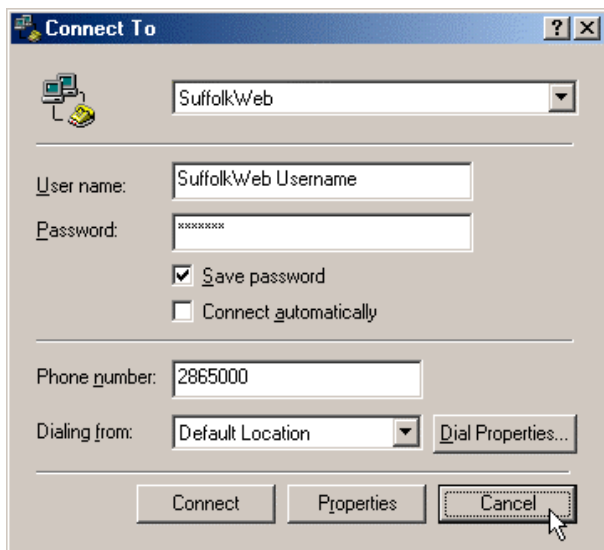
Click on the Dial Properties button to continue



If you have the Call Waiting service, place a check in this box and select \*70, in the other box.

*Note: for phone companies other than Verizon, confirm the exact disabling sequence from your phone company.*

Click OK to continue



**The review is complete.**

Click Cancel to return to the Dial Up Networking folder.

Close Dial Up Networking to return to the Windows Desktop